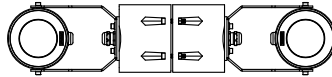
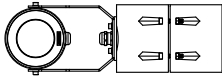


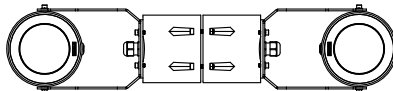
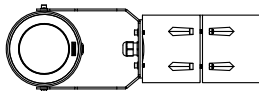
# INSTALLATION AND SERVICE MANUAL

For Installation of Odessa Yoke Mount + Pole Clamp (PC)  
Model. UOD-5xxxx

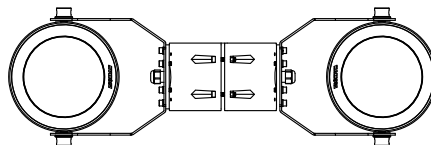
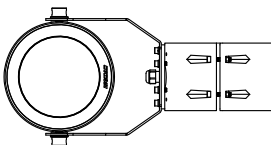
Product drawing (dlmenslons) SUITABLE FOR WET LOCATIONS



**ODESSA SMALL**

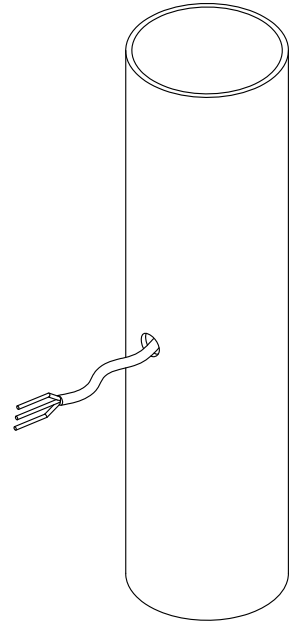


**ODESSA MEDIUM**



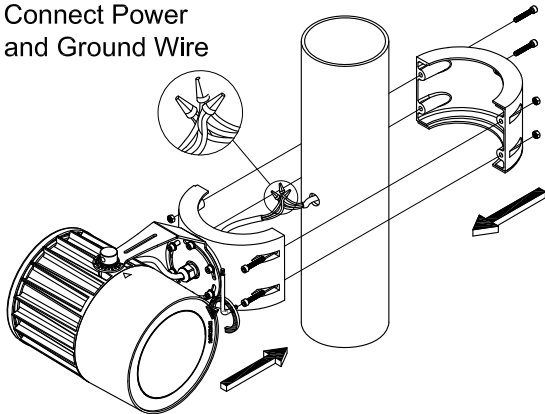
**ODESSA LARGE**

①

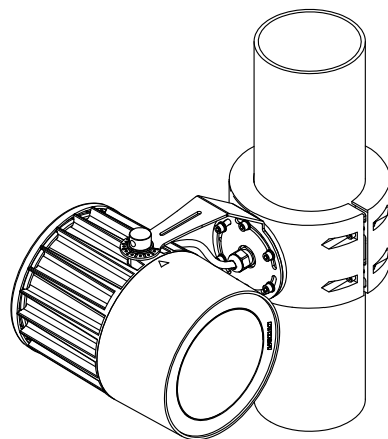


②

Connect Power  
and Ground Wire



③



## Notice to installer :

- 1.WIRING INSTRUCTIONS** Warning : RISK OF FIRE AND ELECTRICAL SHOCK. : FIXTURE MUST BE INSTALLED BY A QUALIFIED ELECTRICIAN ONLY>FIXTURE IS INTENDED FOR INSTALLATION IN ACCORDANCE WITH THE NATIONAL ELECTRICAL CODE, LOCAL AND FEDERAL CODE SPECIFICATIONS. DISCONNECT POWER BEFORE SERVICING.
- 2.This fixture has a VOLTAGE SPECIFIC BALLAST,Check that the supply voltage is the same as the installed ballast voltage.**

**Ligman Lighting USA**

7144 NE Progress Court, Hillsboro  
Oregon, 97124, USA  
Tel : 503 645 0500 | Fax : 503 645 8100